

Name		School	
Class		Date	

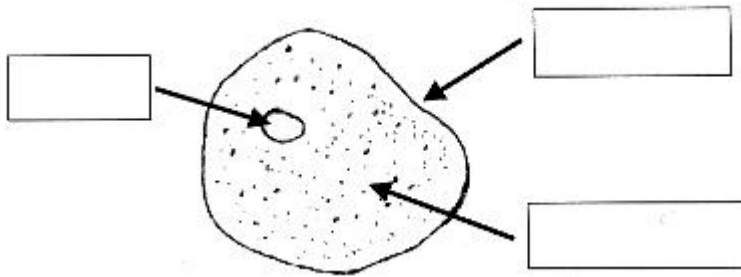
## Laboratory Investigation on Cells

### Looking at cells from multi-cellular Organisms

#### 1. Mouth Cells

Take a cotton bud and gently rub it on the inside of your cheek. Smear the cotton bud onto a microscope slide to cover an area of about 1cm<sup>3</sup>. Now add one drop of methylene blue onto the smear. This will help you to see the cells more clearly. Carefully place a cover slip on top of the blue dye.

Look at the cells under the microscope with the objective lens x10. Compare what you see to the drawing below. Can you observe the same parts?



Labels for the drawing: the **cell membrane** surrounds the cell, the **cytoplasm** contains food and all other substances to allow the cell to function and the **nucleus** contains all the hereditary information.

