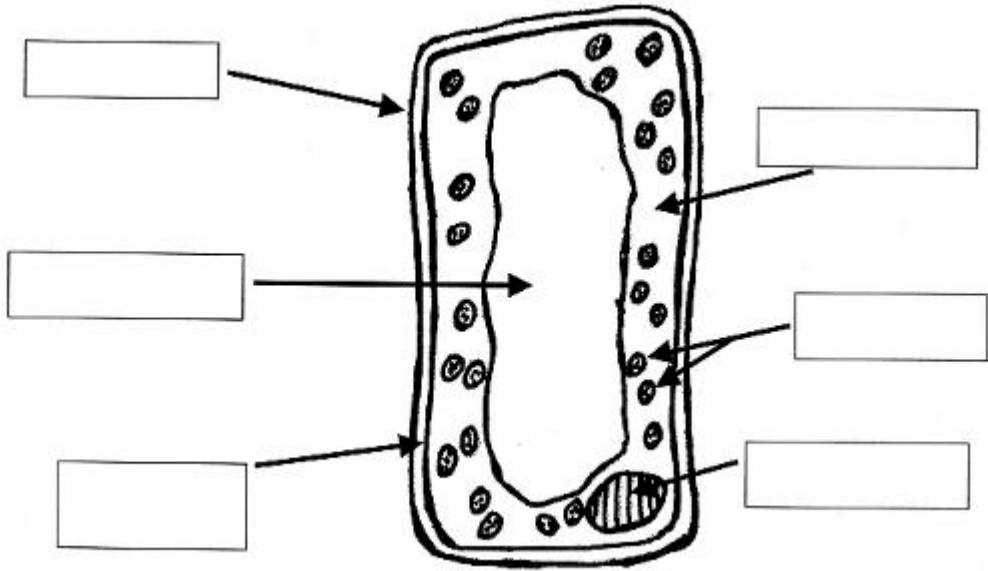


Name		School	
Class		Date	

Laboratory Investigation on Cells
Observing Plant Cells
4. Observing Leaf Cells from Freshwater Pond Weed

Take one leaf of Canadian pond weed. Place it onto the microscope slide and add one drop of water. Place the cover slip on the slide. Observe the slide using the x10 objective.

Can you see cells that look like the one shown in the diagram below?



The labels for this cell are the same as the onion cell with one addition :

Chloroplasts : These green, round structures can absorb sunlight energy and can turn it into food for the plant.