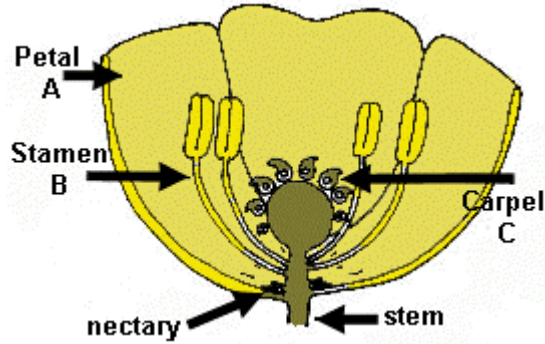
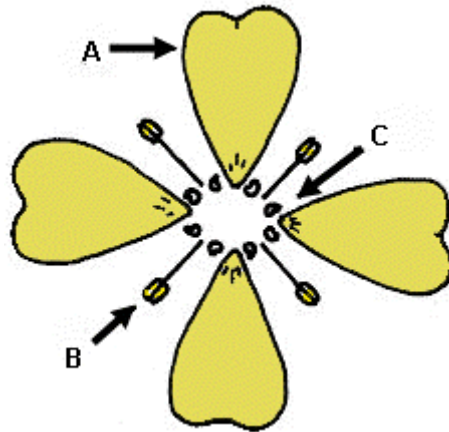


Name		School	
Class		Date	

Dissecting a Typical Insect-pollinated Flower



Carefully remove the parts of a buttercup flower A, B and C shown in the diagram above. Arrange these parts on as piece of black paper, as shown below.



Take three labels and write the names of the flower parts on them. Stick these labels on the black paper in the correct places. Use two more labels for a title and your name. Finally, cover your dissected flower with a piece of sticky paper.